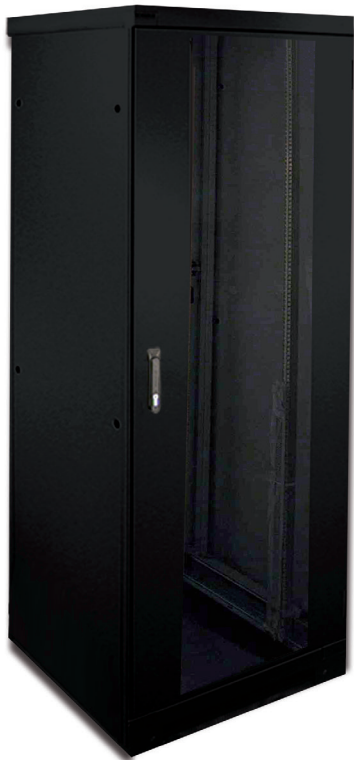




LCS³

19" cabling cabinets



Legrand offers a wide range of server and network cabinets, with flexibility, sustainability and service as the keywords. The server and network cabinets are widely applicable and modular in structure.

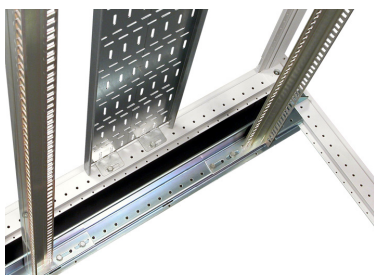
SPECIFICATIONS

- **Colour:** RAL 9011 (black)
- **Frame:** Aluminium, demountable
- **Load capacity:** 1500 kg (static)
- **Front door:** clear glass door.
Door is fitted with a Fix-easy swivel handle with an EK-333 cylinder lock.
- **Rear door:** metal rear door.
Door is fitted with a Fix-easy swivel handle with an EK-333 cylinder lock.
- **Side panels:** metal side panels with quarter-turn lock
- **Roof:** 3 or 4 cut outs with 2 or 3 cable entry brushes and 1 ventilation plate, depending on the frame size
- **Interior:** The cabinet is equipped with 4 x 19"-profiles including height (U) indication
The distance to the cabinet front is set to 175 mm, the pitch to 740 mm
- **Accessories:** The cabinets are supplied with 20 cage nuts and screws



RAL 9011

CABINET	Height in mm	Height in U	Width in mm	Depth in mm
4 460 80	1300	25	800	800
4 460 81	1300	25	800	1000
4 460 82	1800	37	800	800
4 460 83	1800	37	800	1000
4 460 84	2000	41	800	800
4 460 85	2000	41	800	1000
4 460 86	2200	46	800	800
4 460 87	2200	46	800	1000
4 460 88	2075	41	800	800
4 460 89	2075	41	800	1000
4 460 90	2275	46	800	800
4 460 91	2275	46	800	1000



4 460 95 - 4 460 96

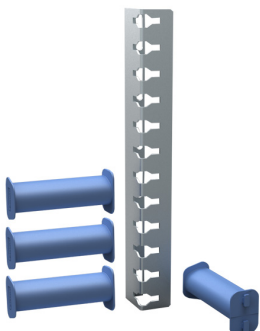


4 460 97



4 460 98

Dimensions:			
	Height	U	25 - 37 - 41 - 46
	Height	mm	1300 - 1800 - 2000 - 2075 - 2200 - 2275
	Width	mm	800
	Depth	mm	800 or 1000
General Specifications:			
	Colour		RAL9011
	Material		Frame, aluminium extrusions
	Static Load Capacity	kg	1500
	Suitability		Legrand aisle containment system
	IP grade		IP20
	Earthing		Doors, side panels, central earthing point
Interior:			
	19-inch profiles	pcs	4
	Material		Aluminium
	Adjustability (depth)		Stepless adjustability
	Adjustability (width)		Adjustable to 21-inch
	U marking		1st U at bottom
	Position, Front Profiles		Position from front 175mm
	Position, Rear Profiles		Intermediate distance 740mm
Front/Rear closure:			
	Front door		Clear glass front door
	Rear door		Metal door
	Security		2-Points Fix-Easy swivel handle with an EK-333 cylinder lock
	Material		Steel door
	Finishing		Powder coated
	Hinges		3 hinges, easily reversable, 180 degree opening
Side closure:			
	End-of-Row Side-Panel Locking		Powder coated (RAL9011) side panels, left and right Quarter-turn locks
Roof:			
	Compatibility		Legrand cable duct system
	Layout and inserts		3 or 4 cut outs with 2 or 3 cable entry brushes and 1 ventilation plate. Depending on the frame size
Approvals:			
	Standards Compliancy		IEC-60297-3-109; IEC-60297-3-100 IEC-60917-2-5 IEC-61587-1; Environmental: C1, A1; Static load LT1, ST1, NL5; Dynamic load DL4V, DL4S, IK04



4 460 50 - 4 460 51



4 460 99



4 460 57

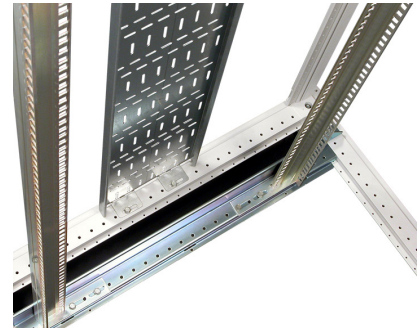


Cable trunking

Cable trunking is available in various heights. It is suitable for vertical cable management. Cables can be attached to the trunking using tie-wraps and/or Velcro. The trunking can easily be fitted from the inside (left or right) to the upper and lower frame.

Material: Sheet steel
Finishing: Galvanised

	Width
4 460 95	200 mm
4 460 96	200 mm



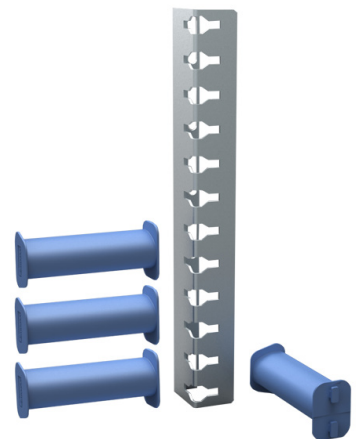
Delivery consists of: 1 cable trunking element incl. fasteners



Assembly profile incl. cable guides

The cable guides are ideal for achieving clearly ordered and arranged cabling. A cable guide is 87 mm long. It can be fitted and removed without machine tools. Cables can be laid per 1U. The radius is particularly suitable for fibre-optic cables. There is room for 24 cables per 1U. The assembly profile incl. cable guides cannot be used in a rack that is 600 mm wide.

Halogen-free
Fire class: UL94-V0
Material: Polyamide
Colour: RAL 5015



	Height in U	Number of cable guides
4 460 50	41	38 front
4 460 51	46	43 front
4 460 54	20 cable guides (without profile)	

Delivery consists of: assembly profile, cable guides incl. fasteners



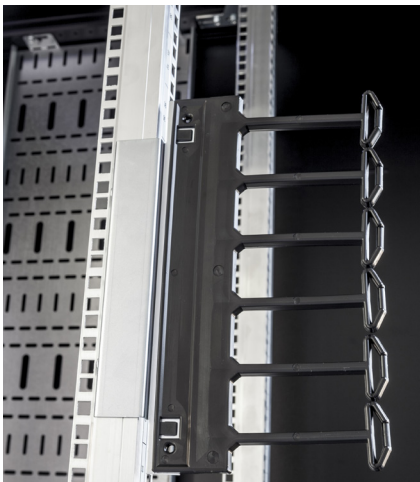
RAL 9011

Triple fan unit with IEC connectors RAL 9011

The triple fan unit allows you to cool the rack. The flow with no load is 480 m³/h. Under normal loads it will be over 300 m³/h. The connection is made using IEC-320 C13 connectors. The fan units can be combined together using a cable with IEC-320 C13 / C14 connectors. As an additional option, this fan unit can be switched automatically using the 4 460 98 thermostat.

	Flow under normal load	Sound level	Electrical data
4 460 97	310 m ³ /h	53,5 dB	230VAC - 0,42A - 66 Watt

Delivery consists of: 1 fan unit, 1 power cable, 1 extender cable incl. assembly materials



Assembly profile incl. high-volume cable guide on 19-inch profiles

The high-volume cable guides are ideal for rapid and effective cabling. This high-volume solution allows you to guide more cables than normal cable guides do.

Material: Polyamide
Colour: Black

	Height in U
4 460 99	6U module
4 460 52	41U assembly profile
4 460 53	46U assembly profile

Delivery consists of: incl. assembly materials



Plastic cable clip

The plastic cable clip is an 'eye' which can be used for cable management. It can be attached without tools to the standard cable trunking (page 39). Set of 10

Material: Polyamide
Fire class: UL94-V0

	Width in mm	Depth in mm
4 460 57	40	78

Delivery consists of: 10 plastic cable clips

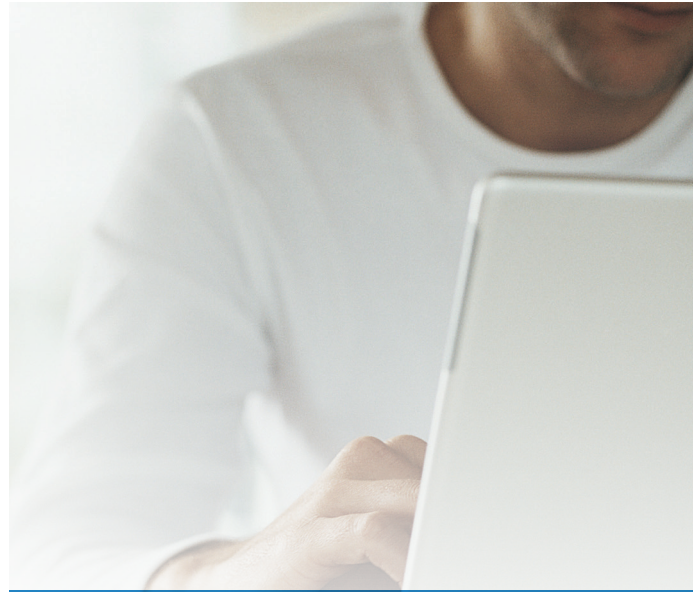


Thermostat for triple fan unit

The thermostat can be used together with the triple fan unit and a roof plate. The thermostat ensures that the fan switches on at a temperature you have selected.

	Thermostat
4 460 98	Suitable for triple fan unit

Delivery consists of: 1 thermostat with cable



FOLLOW US TOO ON

 Datacenter.legrand.com

 [Youtube.com/c/minkelshq](https://www.youtube.com/c/minkelshq)

[Youtube.com/raritaninc](https://www.youtube.com/raritaninc)

 [Linkedin.com/company/legrand-data-center](https://www.linkedin.com/company/legrand-data-center)

[Linkedin.com/company/minkels](https://www.linkedin.com/company/minkels)

[Linkedin.com/company/raritan](https://www.linkedin.com/company/raritan)